



1



2



1



D



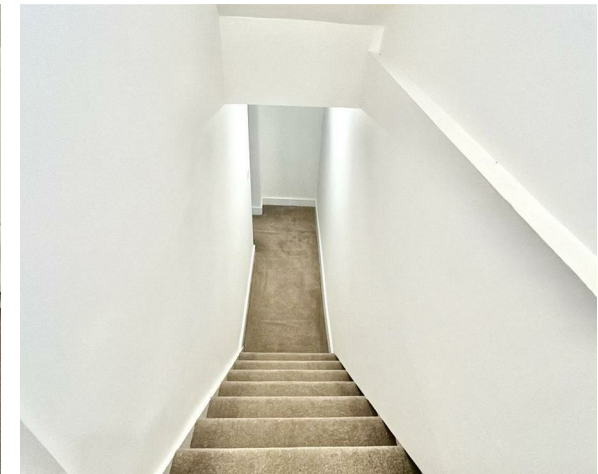
Description

Robert Luff & Co are delighted to present this beautifully refurbished split-level ONE-bedroom / TWO RECEPTION ROOM flat in the sought-after BN17 5PN area of Littlehampton. The property has been finished to a high standard, featuring a brand-new fitted kitchen in 2025, fresh carpets throughout in 2025, and stylish décor that creates a light and modern living space. With the added benefit of private parking, this home offers both comfort and convenience.

Situated close to Littlehampton's seafront, riverside, and marina, the flat enjoys easy access to local shops, cafés, and leisure facilities. Excellent transport links are nearby, with Littlehampton station providing direct rail connections to London, Brighton, and Portsmouth, while the A27 ensures convenient road access across the region. This is an ideal property for those seeking coastal living with modern amenities on the doorstep.

Key Features

- Split-level ONE BEDROM / TWO RECEPTION ROOM FLAT
- Beautifully refurbished throughout in 2025
- EPC energy rating D (65)
- Sought-after BN17 5PN location
- New fitted kitchen
- Light, spacious living areas
- Private parking included



robertluff.co.uk

30 Guildbourne Centre, Worthing, West Sussex, BN11 1LZ | 01903 331247 | info@robertluff.co.uk

Robert
Luff & Co

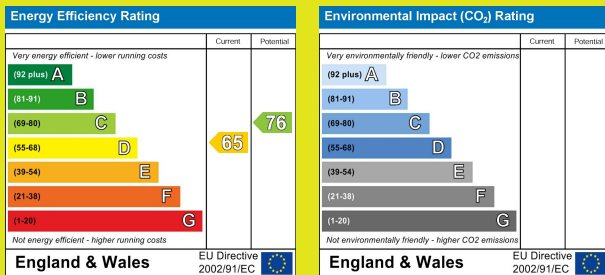


robertluff.co.uk

30 Guildbourne Centre, Worthing, West Sussex, BN11 1LZ | 01903 331247 | info@robertluff.co.uk

Robert
Luff & Co

Floor Plan Norfolk Road



The information provided about this property does not constitute or form any part of an offer or contract, nor may it be regarded as representations. All interested parties must verify accuracy and your solicitor must verify tenure/lease information, fixtures and fittings and, where the property has been extended/converted, planning/building regulation consents. All dimensions are approximate and quoted for guidance only as are floor plans which are not to scale and their accuracy cannot be confirmed. References to appliances and/or services does not imply that they are necessarily in working order or fit for the purpose.

